

AXIAL-PISTON UNITS ARE PRODUCED UNDER THE LICENCE SAUER – SUNDRAND SINCE 1980



GENUINE
SPARE PARTS



SPV 20

SPV 21

SPV 22

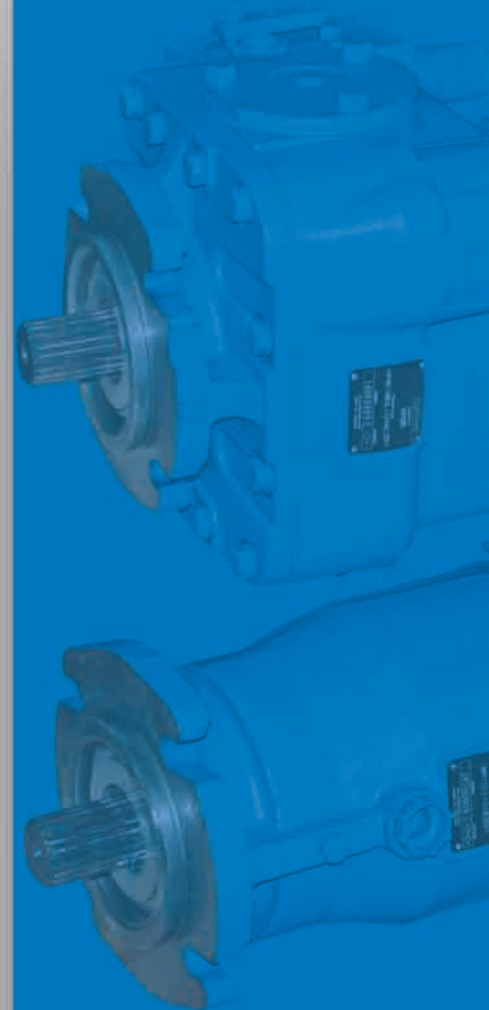
SPV 23

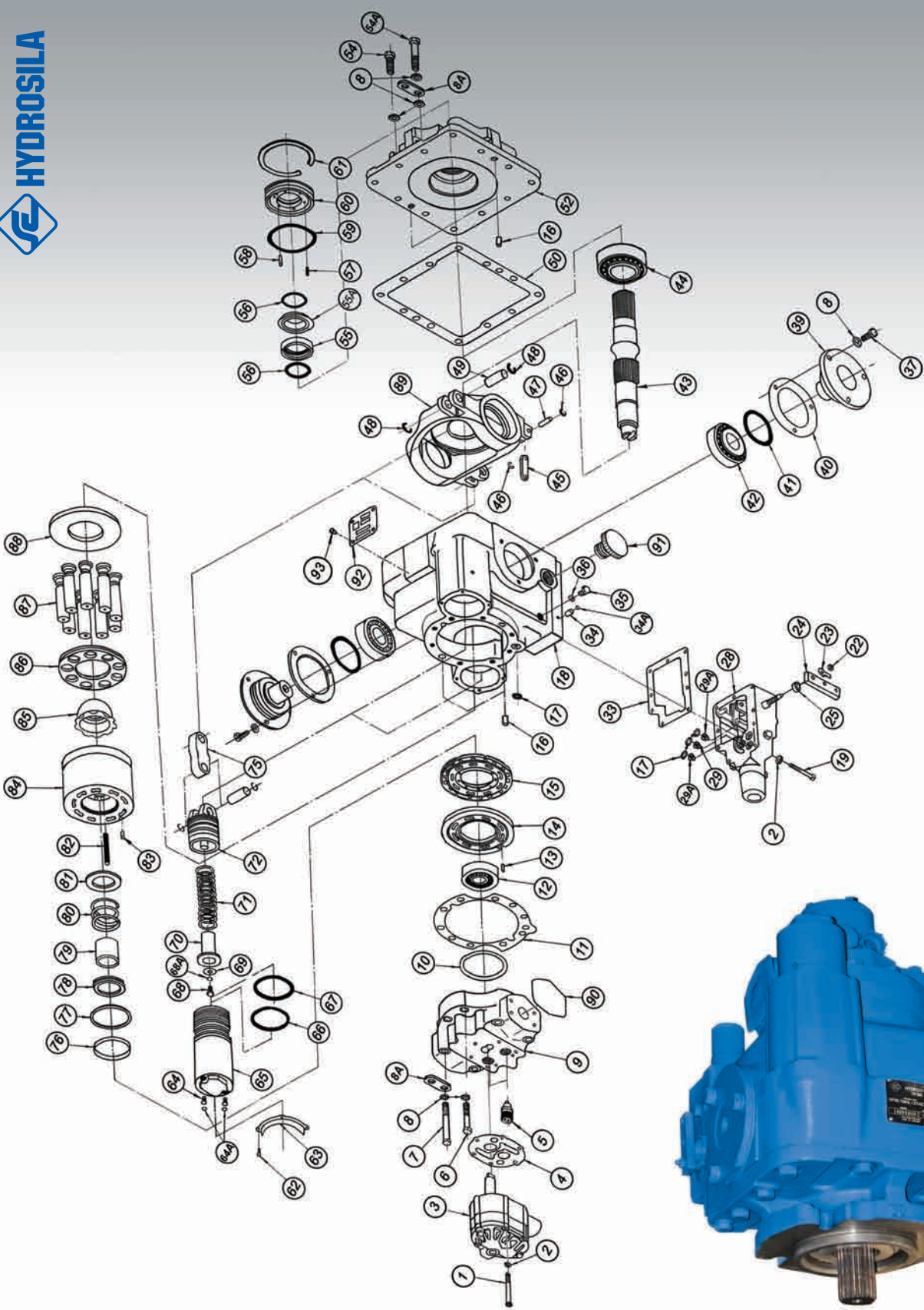
SMF 20

SMF 21

SMF 22

SMF 23



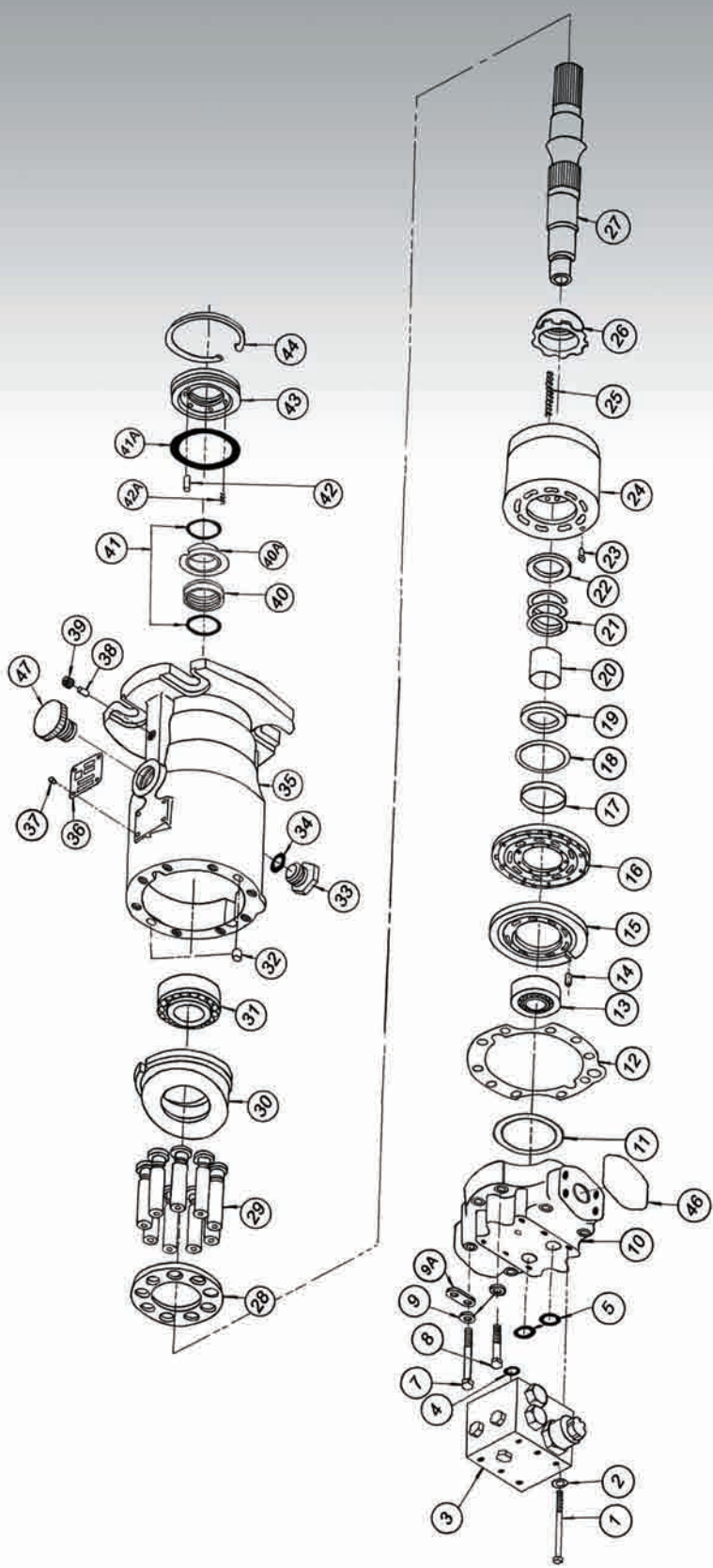


Pos.	Item	Indication					
		20	21	22	23	24	25
1	Hexagonal Bolt	001883	001883	001891	001891		
2	Washer	002295	002295	002245	002295		
3	Charge Pump	018853	018853/007104	007104	007104		
4	Gasket	007377	007377	007377	007377		
5	Check Valve	006650	006650	006650	006650		
6	Hexagonal Bolt	001941	001941	001941	002030		
7	Hexagonal Bolt	001974	001974	001974	002048		
8	Washer	002329	002329	002329	002337		
8A	U-bolt*						
9	Back Cover	002915	003145	003913	004366		
10	Shim	002790	003319	003780	004267		
11	Gasket	002626	003145	003624	004119		
12	Bearing	050567	050591	050617	050641		
13	Cylindrical Pin	001248	001255	001255	001255		
14	Valve Plate	002881	003368	003889	004333		
15	Bearing Plate	002733	003293	003772	004242	004762	005249
16	Cylindrical Pin	001289	001289	001289	001289		
17	Seal Ring	001032	001032	001032	001032		
18	Housing	002683	003236	003749	004192		
19	Hexagonal Bolt	001867	001867	001867	001867		
22	Hexagonal Nut	000786	000786	000786	000786		
23	Toothed Lock Washer	002451	002451	002451	002451		
24	Control Handle	006874	006874	006874	006874		
25	Spacer Control	006882	006882	006882	006882		
28	Control Valve	014027	014027	014027	014027		
29,29A	Orifice	006478	006478	006478	006478		
33	Gasket	007393	007393	007393	007393		
34,34A	Expander	007435	007435	007435	007435		
35	Expander	001552	001552	001552	001552		
36	Seal Ring	001123	001123	001123	001123		
37	Hexagonal Bolt	001909	001909	001925	002006		
39	Trunnion	002519	003020	003475	004036		
40	Shim Pack	002527	003038	003483	004044		
41	Seal Ring	000927	000935	000943	000950		
42	Bearing	050583	050609	050633	050666		
43	Shaft	002865	003325	003855	004317		
44	Bearing	050575	050575	050625	050658		
45	Connecting Link	006825	006288	006288	006288		
46	Thrust Washer	007401	007401	007401	007401		
47	Pin	001362	001362	001362	001362		
48	Thrust Washer	010512	010512	013649	013649		
49	Pin	013004	013904	013680	013680		

* supplied only in assembled unit

**VARIABLE DISPLACEMENT AXIAL PISTON PUMP
PV90-00.000(Sauer SPV23)**

Pos.	Item	Indication					
		20	21	22	23	24	25
50	Gasket	002592	003137	003632	004101		
52	Cover	002584	003129	003590	004127		
54	Hexagonal Bolt	001933	001933	001933	002014		
54A	Hexagonal Bolt	001933	001933	001933	002022		
55,55A	Seal	050831	050831	050831	051946		
56	Seal Ring	008821	008821	008821	008979		
57	Spring	003566	003566	003566	003566		
58	Cylindrical Pin	001206	001206	001206	001206		
59	Seal Ring	000968	000968	000968	000984		
60	Seal Frame	003111	003111	003111	004655		
61	Retaining Ring	001719	001719	001719	001727		
62	Screw	007419	007419	007419	007419		
63	Sleeve Retainer	002618	002618	003608	003608		
64,64A	Expander	007427	007427	007427	007427		
65	Servo Sleeve	002808	002808	003798	003798		
66	Seal Ring	000869	000869	000885	000885		
67	Seal Ring	000851	000851	000877	000877		
68	Screw / Bolt*						
68A	Washer*						
69	Washer	010652	010652	007500	007500		
70	Spring Guide	003103	003103	003657	003657		
71	Servo Spring	010264	010264	004390	004390		
72	Servo Piston	010256	010256	003970	003970		
75	Link	014639	014639	008946	008995		
76	Pilot Ring	002709	010678	013862	004325	004721	005215
77	Ring*						
78	Washer	002766	003004	003558	004010	004465	005207
79	Spring Guide	002501	003012	003467	004028	004473	005017
80	Spring	014019	003418	013797	014753	004952	014936
81	Washer	002493	002998	003541	004002	004457	005009
82	Spring	002485	002980	014860	014902	004440	004994
83	Cylindrical Pin	002741	002741	004804	004804	004804	004804
84	Cylinder Block	002782	003269	014878	014910	004747	005231
85	Retainer Guide	002642	003160	003665	004143	004663	005090
86	Slipper Retainer	002667	003210	003707	004176	004697	005173
87	Piston Assembly	010462	014662	014845	014621	014761	005454
88	Thrust Plate	010520	003228	003699	004184		
89	Swash Plate	002725	003194	003673	004168		
90	Expander*						
91	Shipping Screw Plug*						
92	Nameplate*						
93	Fastener*						



FIXED DISPLACEMENT AXIAL PISTON MOTOR
MF90-00.000(Sauer SMF23)

Pos.	Item	Indication					
		20	21	22	23	24	25
1	Hexagonal Bolt	001917	001917	001917	001917		
2	Washer*						
3	Vanifold Valve	006619	006619	006619	006619		
4	Seal Ring	000836	000836	000836	000836		
5	Seal Ring	001073	001073	001073	001073		
7	Hexagonal Bolt	001974	001974	001974	002048		
8	Hexagonal Bolt	001941	001941	001941	002030		
9	Washer	002329	002329	002329	002337		
9A	U-bolt*						
10	Back Cover	002923	003400	003921	004374		
11	Shim	002790	003319	003780	004267		
12	Gasket	002626	003145	003624	004119		
13	Bearing	050567	050591	050617	050641		
14	Cylindrical Pin	001248	001255	001255	001255		
15	Valve Plate	002907	003384	003905	004358		
16	Bearing Plate	002733	003293	003772	004242	004762	005249
17	Pilot Ring	002709	010678	013862	004325	004721	005215
18	Ring*						
19	Washer	002766	003004	003558	004010	004465	005207
20	Spring Guide	002501	003012	003467	004028	004473	005017
21	Spring	014019	003418	013797	014753	004952	014936
22	Washer	002493	002998	003541	004002	004457	005009
23	Cylindrical Pin	002741	002741	004804	004804	004804	004804
24	Cylinder Block	002782	003269	014878	014910	004747	005231
25	Spring	002485	002980	014860	014902	004440	004994
26	Retainer Guide	002642	003160	003665	004143	004663	005090
27	Shaft	002873	003343	003863	009514		
28	Slipper	002667	003210	003707	004176	004697	005173
29	Piston Assembly	010462	014662	014845	014621	014761	005454
30	Swash Plate	002717	003277	003764	004234		
31	Bearing	050575	050575	050625	050658		
32	Cylindrical Pin	001289	001289	001289	001289		
33	Expander	008862	008862	008862	008862		
34	Seal Ring	001149	001149	001149	001149		
35	Housing	002600	003152	003582	004135		
36	Nameplate*						
37	Fastener*						
38	Cylindrical Pin	001255	001255	001263	001271		
39	Tapered Plug	001479	001479	001479	001479		
40,40A	Bushing	050831	050831	050831	051946		
41	Seal Ring	008821	008821	008821	008979		
41A	Seal Ring	000968	000968	000968	000984		
42	Cylindrical Pin	001206	001206	001206	001206		
42A	Spring	003566	003566	003566	003566		
43	Seal Frame	003111	003111	003111	004655		
44	Retaining Ring	001719	001719	001719	001727		
46	Expander*						
47	Shipping Screw Plug*						

* supplied only in assembled unit

Framesize	Shaft configuration
20	z = 14;19;21
21	z = 14;19;21
22	z = 14;19;20;21; tapered, straight
23	z = 14;19;21;23;20;27; tapered, straight
24	z = 13;27
25	z = 13;27
26	z = 27
27	z = 40



**Provide the long life of your
machines, purchase original
spare parts from our authorized
representatives.**

**Trading house 'Hydrosila'
7, Ordzhonikidze, Str.,
25002 Kirovograd, Ukraine**

tel./fax:

+38 (0522) 35-83-37

35-83-58, 35-83-17

e-mail:

sales1@kpk.net.ua

sales2@kpk.net.ua

sales3@kpk.net.ua



**Quality management system
conforms to ISO 9001:2000
standards (by Bureau Veritas).**